



BENEFITS FOR CLINICAL STAFF

Thanks to the Touch Control Panel the medical team can receive information about the medical gas system, HVAC plant and electric power supply system.

PERPICACIOUS

Designed particularly for the theatre staff who will use this effectual Touch Control Panel.

TCP is easy to understand and simple to use thanks also to a modern tablet-like design similar to the smartphones we all use everyday.

DESIGN

Attractive, enticing and modern solution and graphics not only make the TCP easy to use but also complement the pleasing appearance of today's high tech operating theatres.

The upper level displays include just the Information and controls that are pertinent to the clinical users.

Detailed technical information is available in sub-menus for engineering staff should they need it.

EASY TO CLEAN

Smooth flat surfaces are easy to wipe down.

The screen is protected by a glass and the device is sealed against dust and fluids.

ADVANTAGES & CHARACTERISTICS

- L Glass touchscreen
- L Installation on different kinds of wall:
Gypsum board, brick wall and also other Kinds of prefabricated cladding walls
- L Interactive display
- L Flexible and user friendly in/out interface
- L Control Panel is easily suitable to be placed in controlled bacterial contamination operating areas.

Moreover, thanks to the technology the panel can be used with or without surgical gloves.



TOTALLY CUSTOMIZABLE

THE NEW VERSION OF I-CONTROL CAN BE CUSTOMIZED BY THE CUSTOMER IN COMPLETE AUTONOMY.

Why choose I-CONTROL?



Timer Principale
00:00:00

Temperatura
22,4 °C
SET 24 + -

Umidità
44,9 H%
SET 44 + -

P Ambiente
48 Pa
SET 43 + -

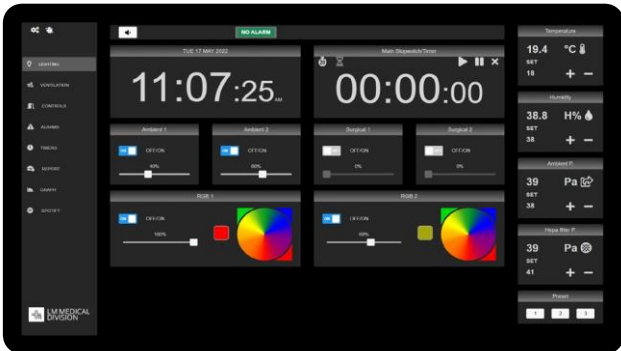
P filtro HEPA
48 Pa
SET 44 + -

Preset
1 2 3

Sciallifica 1
ON/OFF
100%

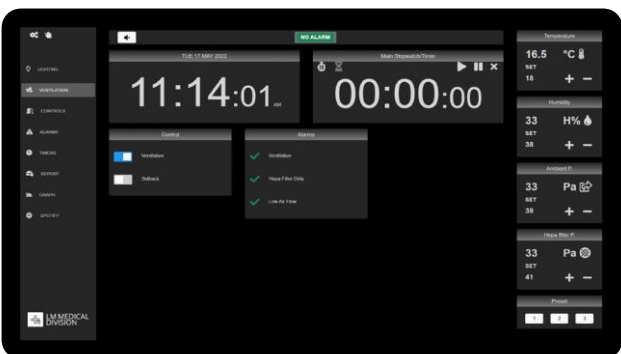
Sciallifica 2
ON/OFF
100%

RGB 2
ON/OFF
0%



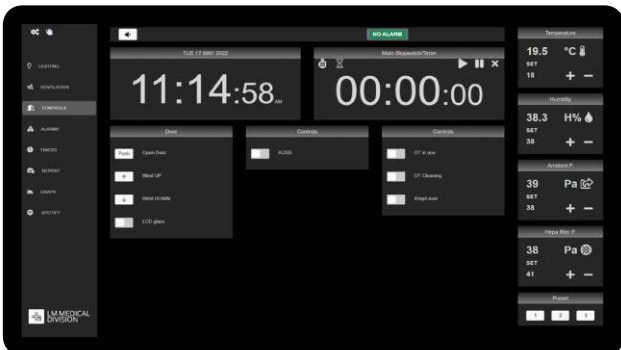
Lighting Page

Lighting control is fully customizable and personalizable using technologies such as DMX and DALI.



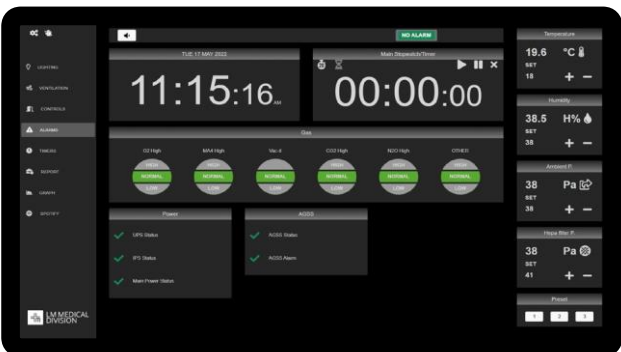
Ventilation Page

Ventilation Page In pellet que nus et quis pelesedis eic tem esti cor saerspe dicimusdae mi, sinctur modistem cum, suntibusam excerum quo corrovit, odit eaque resequatem excessi maiost, qui ipsa serrorr oremqui te doluptatur accatenis aute sam consenda pel in poratis



Alarms Page

Alarms page could represents many alarms inputs. Alarms could be added and changed at customer needs. A buzzer will warn in case of alarm.

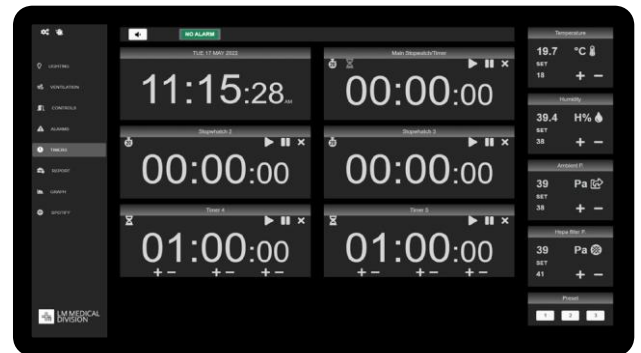


Control Page

In this page is possible to control many device such as doors, blinds, external device. Is possible to select between different type of output like temporary control, on/off control, 0-10V regulation.

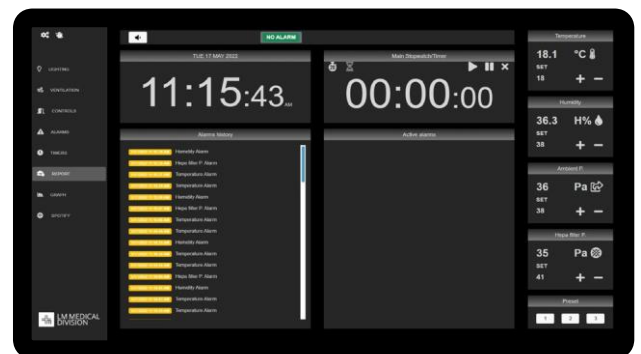
Time Page

In this page is possible to find all the alarms and the related date and time



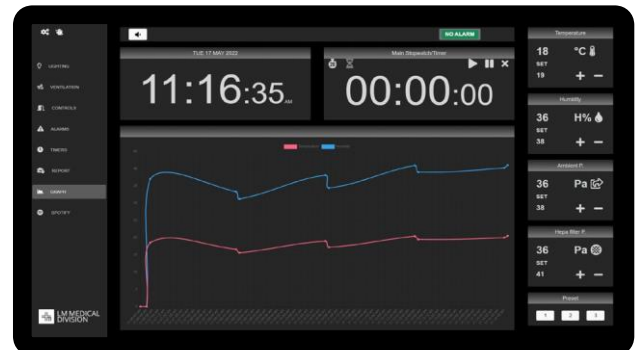
Report Page

In this page is possible to find the alarms history and the related date and time



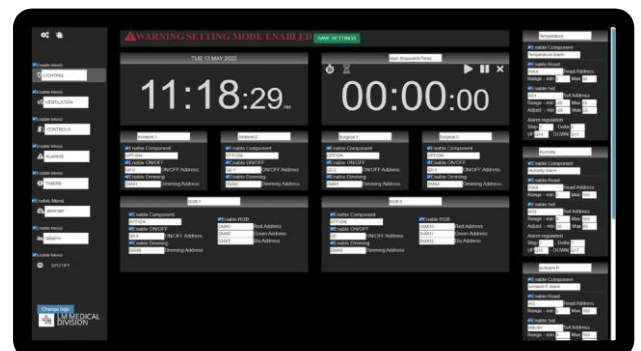
Graph Page

Thanks to this page is possible to visualize the temperature and humidity graphs.



Setting Page

Thanks to the settings page is possible to adapt and adjust all the pages according to the customer's requests. All the text could be personalized. Various languages are available for selection.



I-CONTROL connection



Differential pressure measuring for ambient and for HEPA filter

Clock function



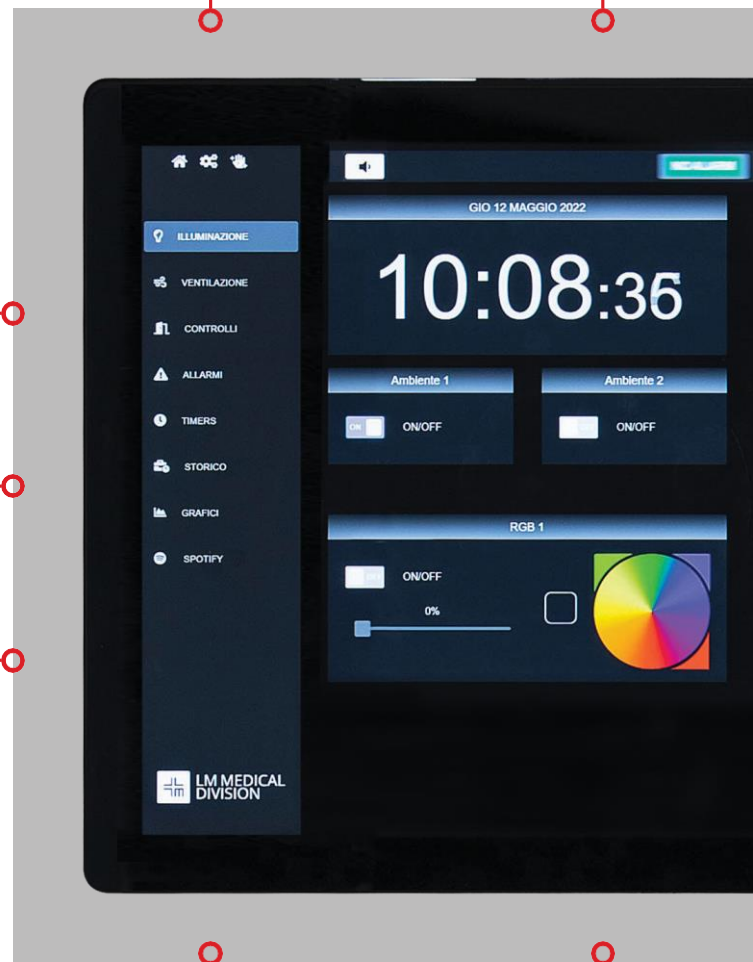
Temperature and humidity measuring for ambient



Medical gases



IPS - Isolated Power Supply



Ambient lights



Color of the lights



Electrical
alarm



Timer



Multimedia



Hands free
phone

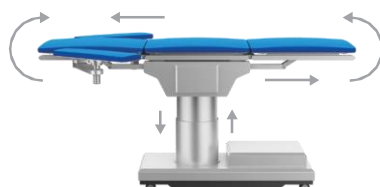
Ventilation
Control HVAC



Surgical
lights



Operating
table position
adjustment

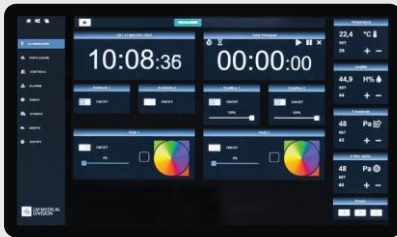


CONTROL TOUCH PANEL FOR OPERATION THEATRE

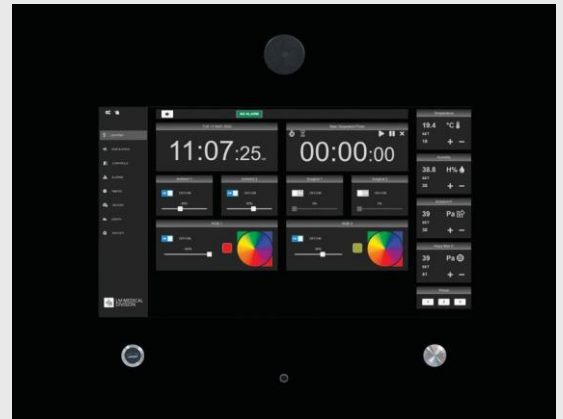
Function and controls	Standard Version*	Optional
Control of Operating Lights		
Ambient 1/2 (ON/OFF)	●	
Ambient 1/2 dimming (DALI/DMX)		●
OT1/OT2 - surgical lamps (ON/OFF)	●	
OT - surgical lamps dimming (verify communication protocol)		●
Colour Ambient RGBW (ON/OFF) and dimming (DALI/DMX)		●
Timing		
Time and calendar	●	
Main timer/chronometer	●	
2x Additional chronometers	●	
Ventilation		
Ventilation (ON/OFF)	●	
Ventilation setback (ON/OFF)	●	
Laminar flow alarms	●	
Temperature and humidity set point (ON/OFF)	●	
Temperature and humidity visualization (0-10V / 4-20mA) (optional sensors)*	●	
Differential Temperature and humidity alarm	●	
Differential atmospheric pressure alarm (0-10V (optional sensors)*	●	
Differential HEPA filter pressure alarm (0-10V) (optional sensors)*	●	
Integration control BMS with protocol to be define with plan supplier		●
Gas		
2 level gas alarm (low/high pressure) (ON/OFF) (optional sensors)*	●	
Pressure measurement of gas (0-10V) (optional sensors)*		●
Agss pump start/alarm/fault (ON/OFF)	●	
Power		
USP/IPS/MAIN alarm (ON/OFF)	●	
Controls		
free/in use/cleaning/xray signalling (on/off)	●	
Shutters	●	
doors	●	
digital glass	●	
Memory presets	●	
Lighting and ventilation presets	●	
Communication		
Communication protocols MODBUSTCP and PROFINET		●
Standalone configuration	●	
Intranet and cloud configuration		●
Software client for intranet/cloud		
Multimedia control for music		
Ups predisposition (optional UPS)*		
	●	

* **STANDARD VERSION:** 22 digital input - 18 digital output (relay) - 4 analog input - 2 analog output - **CUSTOMIZABLE BY THE CUSTOMER**

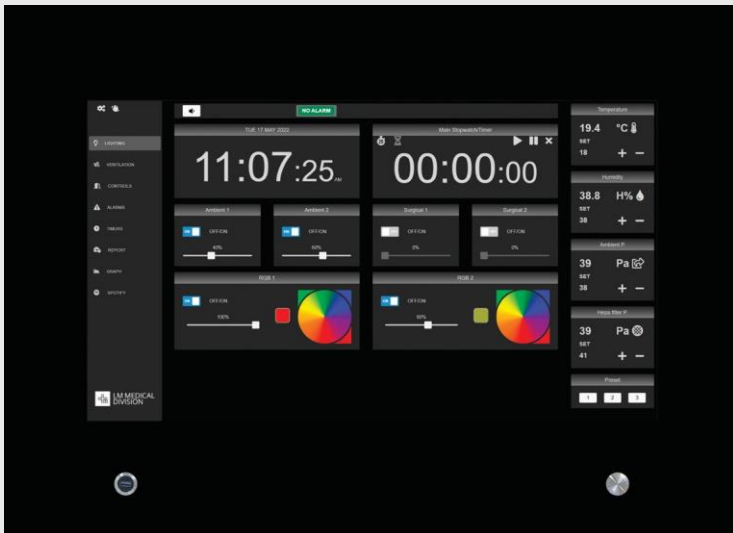
Display options



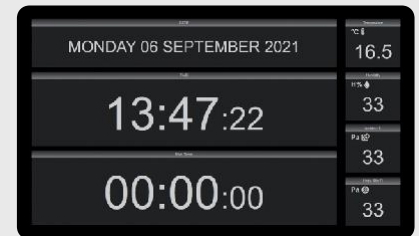
22" display
WITHOUT GLASS



22" display WITH GLASS



32" display WITH GLASS



22" additional clock

HARDWARE

CPU	Intel processor, 4GB RAM, 64GB SSD, Win10 Pro
PLC	22 digital input - 18 digital output (relay) - 4 analog input - 2 analog output
Main display	Touchscreen display 22" or 32", 1920x1080 px
Additional clock display	Display 22", 1920x1080 px

The number of inputs and outputs both digital and analogue can be modified (with additional costs) .

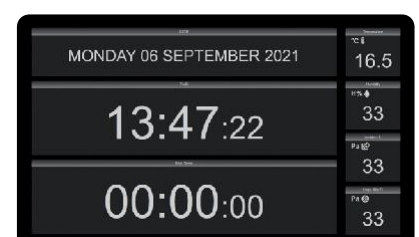
REGULATION

- The equipment should be considered **Class I**
- **CE** marked









- **Low voltage directive (LVD) 2014/35/UE**
- **Electromagnetic compatibility (EMC) 2014/30/UE**

STAND-ALONE CLOCK

- └ 22" screen
- └ Is possible to visualize 4 analogic input
- └ Start/stop/reset through external digital input
- └ Timer/Stopwatch selection
- └ No any other device involved (no external PLC box)



OPTIONAL ACCESSORIES

	<p>Differential pressure measuring for ambient</p> <ul style="list-style-type: none"> - To measure the differential pressure between OT room and outside of OT room - Analog output 0-10V - Alarm displayed on I-CONTROL touch screen - Included adaptor for false ceiling
	<p>Differential pressure measuring for HEPA filter</p> <ul style="list-style-type: none"> - To measure the differential pressure between input and output of HEPA filter - Analog output 0-10V - Alarm displayed on I-CONTROL touch screen
	<p>Temperature and humidity measuring for ambient</p> <ul style="list-style-type: none"> - To measure the temperature and humidity in the OT room (0 - 50°C / 0 - 100%) - 2x Analog output 0-10V - Both value displayed on I-CONTROL touch screen
	<p>Pressure transmitter for medical gases</p> <ul style="list-style-type: none"> - Pressure measure from 0 to 16 bar - Analog output 0-10V - For O₂, AIR₄, AIR₈, N₂O, CO₂, N, ENX - With cable 1,5mt - Value displayed on I-CONTROL touch screen
	<p>Double state pressure switch for medical gas</p> <ul style="list-style-type: none"> - Pressure switch calibrated 3,2 (low level) - Pressure switch calibrated 4,8 (high level) - For O₂, AIR₄, N₂O, CO₂, N, ENX - With cable 1,5mt - Alarm displayed on I-CONTROL touch screen
	<p>Double state pressure switch for air 8 bar</p> <ul style="list-style-type: none"> - Pressure switch calibrated 6,4 (low level) - Pressure switch calibrated 9,6 (high level) - For AIR₈ - With cable 1,5mt - Alarm displayed on I-CONTROL touch screen
	<p>Vacuum switch for VAC</p> <ul style="list-style-type: none"> - Vacuum switch calibrated -0,4 bar - With cable 1,5mt - Alarm displayed on I-CONTROL touch screen
	<p>Finishing frame</p> <ul style="list-style-type: none"> - To cover hole - For 22" touch screen (Only for version without glass)

MANY OTHER ACCESSORIES ARE AVAILABLE.

Connection

STAND-ALONE

(standard option)



INTRANET



Accessible from any PC, laptop, tablet or smartphone. Compatible with most popular browsers gives you access and functionality **INSIDE THE HOSPITAL NETWORK**, with the possibility of data backup.

CLOUD



Accessible from any PC, laptop, tablet or smartphone. Compatible with most popular browsers gives you access and functionality **WHEREVER YOU ARE**, with the possibility of data backup.

Layout

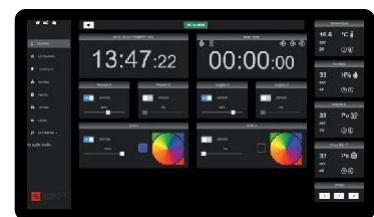
OUTSIDE OT

PLC BOX

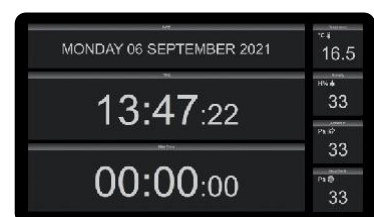


INPUT / OUTPUT CONNECTION

INSIDE OT



Touch Screen



Additional Clock Box
(Optional)

INCLUDED CABLING

INCLUDED CABLING

This catalogue can be updated at any time without any notice so please check with our sales department the latest current version available.



LM MEDICAL DIVISION s.r.l.
Via Brigade Alpine, 9
25036 Palazzolo sull'Oglio
Brescia - Italy

Phone +39 030 7453357
info@lmmedicaldivision.com

www.lmmmedicaldivision.com



REG. N. IT-79003



EN ISO 13485

