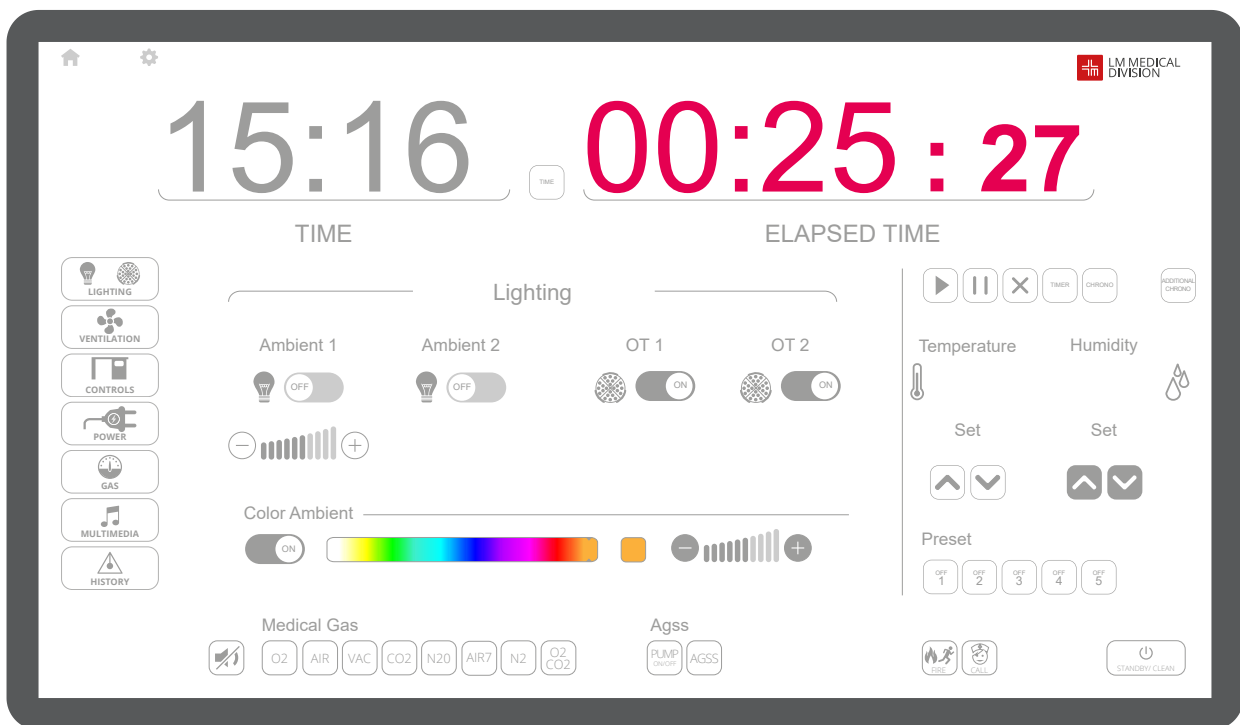




LM MEDICAL
DIVISION

HEALTHCARE DESIGN TECHNOLOGY



Why choose I-CONTROL?



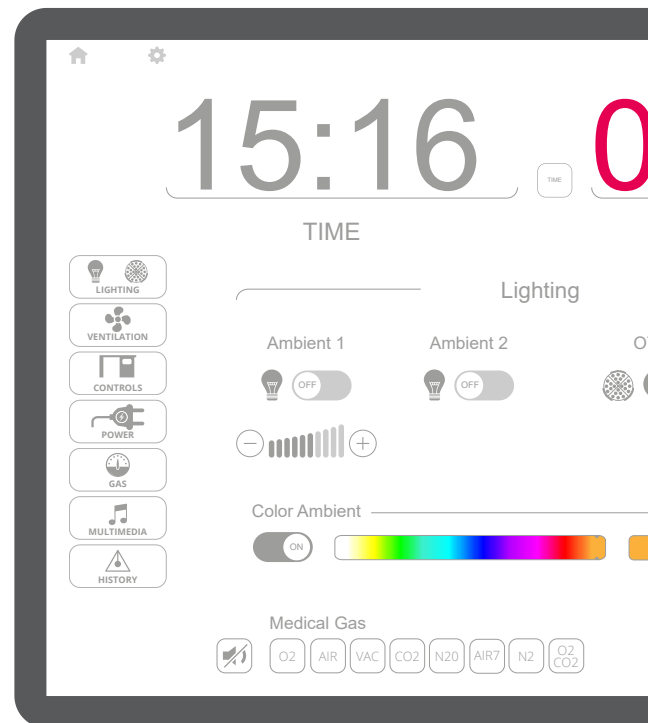
BENEFITS FOR CLINICAL STAFF

Thanks to the Control Panel the medical team can receive information about the medical gas system, HVAC plant and electrican power supply system.



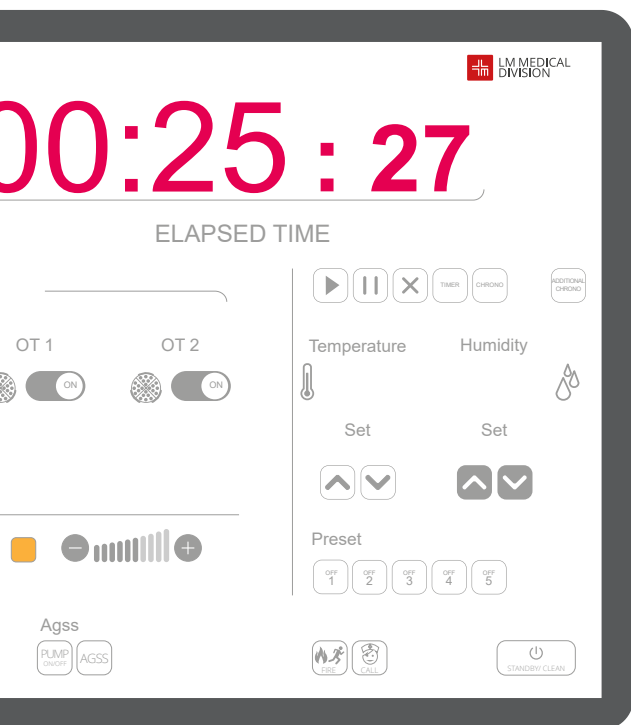
DESIGN

Attractive, enticing and modern solution and graphics not only make the CP easy to use but also complement the pleasing appearance of today's high tech operating theatres.



ADVANTAGES & CHARACTERISTICS

- Glass touchscreen
- Installation on different kinds of wall:
Gypsum board, brick wall and also other Kinds of prefabricated cladding walls
- Interactive display



PERPICACIOUS

Designed particularly for the theatre staff who will use this effectual Control Panels.

CP is easy to understand and simple to use thanks also to a modern tablet-like design similar to the smartphones we all use everyday.

The upper level displays include just the Information and controls that are pertinent to the clinical users.

Detailed technical information is available in sub-menus for engineering staff should they need it



EASY TO CLEAN

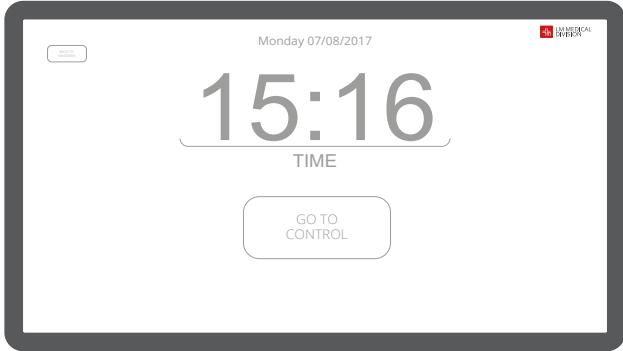
Smooth flat surfaces are easy to wipe down. The screen is protected by a glass and the device is sealed against dust and fluids.

-Flexible and user friendly in/out interface

-Control Panel is easily suitable to be placed

in controlled bacterial contamination operating areas.

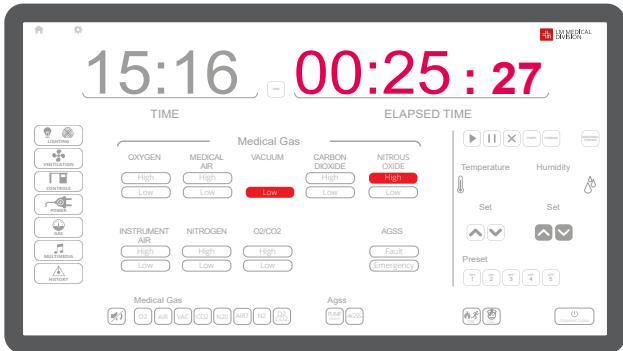
Moreover, thanks to the technology the panel can be used with or without surgical gloves



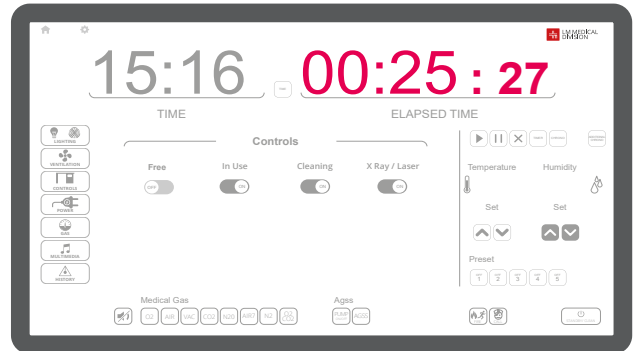
Home Page



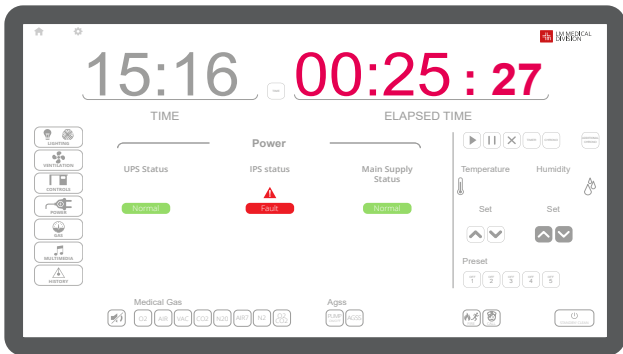
Lighting Page



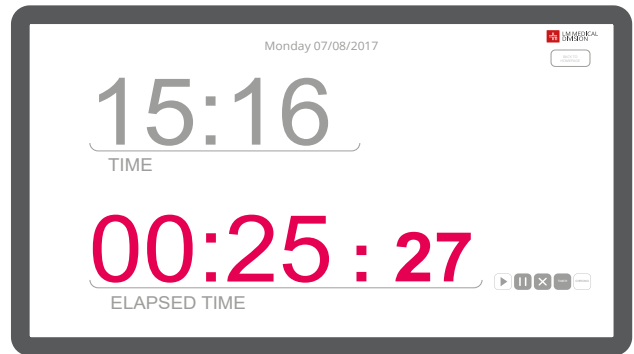
Medical Gas Page



Control Page



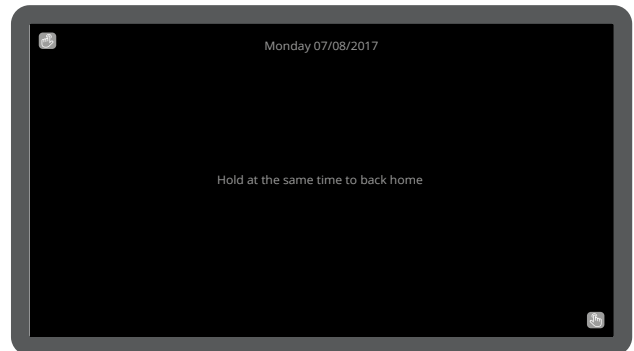
Power Page



Time Page



Ventilation Page



Stand-by / Cleaning Page

CONTROL TOUCH PANEL FOR OPERATION THEATRE

Function and controls	Standard Version	Optional
Control of Operating Lights		
Ambient 1/2 (ON/OFF)	X	
Ambient 1/2 dimming (DALI/DMX)		X
OT1/OT2 - surgical lamps (ON/OFF)	X	
OT - surgical lamps dimming (verify communication protocol)		X
Colour Ambient RGBW (ON/OFF) and dimming (DALI/DMX)		X
Timing		
Time and calendar	X	
Main timer/chronometer	X	
2x Additional chronometers	X	
Ventilation		
Ventilation (ON/OFF)	X	
Ventilation setback (ON/OFF)	X	
Laminar flow alarms	X	
Temperature and humidity set point (ON/OFF)	X	
Temperature and humidity visualization (0-10V / 4-20mA) (optional sensors)*	X	
Differential Temperature and humidity alarm	X	
Differential atmospheric pressure alarm (0-10V (optional sensors)*	X	
Differential HEPA filter pressure alarm (0-10V) (optional sensors)*	X	
Integration control BMS with protocol to be define with plan supplier		X
Gas		
2 level gas alarm (low/high pressure) (ON/OFF) (optional sensors)*	X	
Pressure measurement of gas (0-10V) (optional sensors)*		X
Agss pump start/alarm/fault (ON/OFF)	X	
Power		
USP/IPS/MAIN alarm (ON/OFF)	X	
Controls		
free/in use/cleaning/xray signalling (on/off)	X	
Shutters	X	
doors	X	
digital glass	X	
Memory presets		
Lighting and ventilation presets	X	
Communication		
Communication protocols MODBUSTCP and PROFINET	X	
Standalone configuration (see page 6)	X	
Intranet and cloud configuration (see page 6)		X
Software client for intranet/cloud		X
Multimedia control for music		X
Ups predisposition (optional UPS)*	X	
Remote manual control for lighting (optional CONTROL)*	X	

*Please see page 7 for optional sensor and accessories

CONNECTION

STANDALONE (standard option)



INTRANET



accessible from any PC, laptop, tablet or smartphone without having to download any applications. Compatible with most popular browsers gives you access and functionality **INSIDE THE HOSPITAL NETWORK**, with the possibility of data backup.

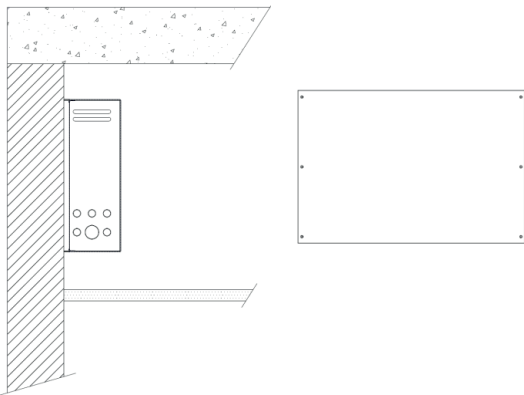
CLOUD



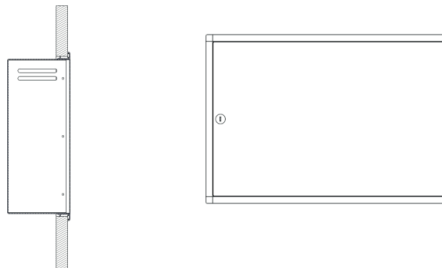
accessible from any PC, laptop, tablet or smartphone without having to download any applications. Compatible with most popular browsers gives you access and functionality **WHEREVER YOU ARE**, with the possibility of data backup.

FASTENING OF PLC BOX

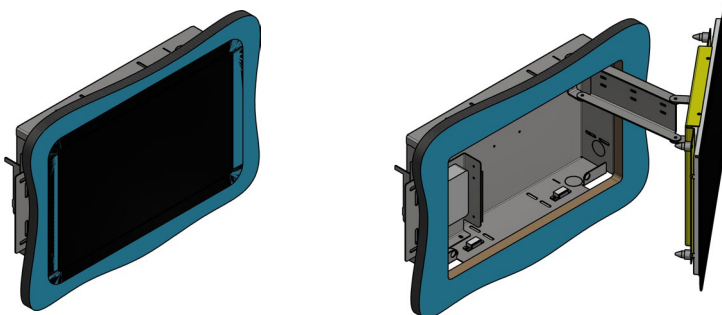
ON FALSE CEILING Standard Option



RECESSED



FASTENING OF I-CONTROL TOUCH PANEL BOX



OPTIONAL ACCESORIES



Differential pressure measuring for ambient

- To measure the differential pressure between OT room and outside of OT room
- Analog output 0-10V
- Alarm displayed on I-CONTROL touch screen
- Included adaptor for false ceiling

Differential pressure measuring for HEPA filter

- To measure the differential pressure between input and output of HEPA filter
- Analog output 0-10V
- Alarm displayed on I-CONTROL touch screen



Temperature and humidity measuring for ambient

- To measure the temperature and humidity in the OT room (0 - 50°C / 0 - 100%)
- 2x Analog output 0-10V
- Both value displayed on I-CONTROL touch screen



Pressure transmitter for medical gases

- Pressure measure from 0 to 16 bar
- Analog output 0-10V
- For O₂, AIR₄, AIR₈, N₂O, CO₂, N, ENX
- With cable 1,5mt
- Value displayed on I-CONTROL touch screen



Double state pressure switch for medical gas

- Pressure switch calibrated 3,2 (low level)
- Pressure switch calibrated 4,8 (high level)
- For O₂, AIR₄, N₂O, CO₂, N, ENX
- With cable 1,5mt
- Alarm displayed on I-CONTROL touch screen



Double state pressure switch for air 8 bar

- Pressure switch calibrated 6,4 (low level)
- Pressure switch calibrated 9,6 (high level)
- For AIR₈
- With cable 1,5mt
- Alarm displayed on I-CONTROL touch screen



Vacuum switch for VAC

- Vacuum switch calibrated -0,4 bar
- With cable 1,5mt
- Alarm displayed on I-CONTROL touch screen



Finishing frame

- To cover hole
- For 22" touch screen



UPS system

- To have continuous supply to touch screen in case of blackout
- Manual emergency controls To control



Manual emergency controls

- To control lighting and other basically device in case of blackout or emergency

TECHNICAL DATA SHEET

DISPLAY

Display	21.5" /31.5" TFT LCD LED Backlight /
Active Display Area	Active Display Area 476.6 x 268.1 mm / 18.76 x 10.55 inches
Aspect Ratio	16:9
Native Resolution	1920 x 1080 at 50, 60 Hz
Colors	16.7 million
Brightness (typical)	LCD Panel: 250 nits;
Response (typical)	5ms
Viewing Angle	Horizontal: 85°/170°; Vertical: 80°/160°
Contrast Ratio	1000:1
Power Consumption	ON (monitor + power brick): 18W SLEEP (monitor + power brick): 1.5W OFF (monitor + power brick): 0.5W
Temperature	Operating: 0 °C to 40 °C (32 °F to 104 °F); Storage: -20 °C to 60 °C (-4 °F to 140 °F)
Humidity	Operating: 20% to 80%; Storage: 10% to 95%
Benefits	PCAP 2GS (two glass solution) offers pristine optical clarity and touch durability High definition LCD display offers ultimate HD interactivity, clarity and resolution LED backlighting allows for state-of-the-art slim design while reducing power consumption 10 touch projected capacitive (PCAP) with Thru-glass capabilities that passes UL-60950 & IK-07 Impact testing

HARDWARE

CPU	Intel processor, 4GB RAM, 64GB SSD, Win10 Pro
PLC	Siemens S7 -

Uses Siemens core components which is recognized name in the building management arena and enables global spares availability. The number of inputs and outputs both digital and analogue can be modified (with additional costs).

REGULATION

The equipment should be considered Class I

CE marked

Low voltage directive (LVD) 2006/95/CE

Electromagnetic compatibility (EMC) 2004/108/CE



ISO 9001:2008



REG. N. IT-79003



EN ISO 13485:2012



**LM MEDICAL
DIVISION**

LM MEDICAL DIVISION s.r.l.
Via Bornico - 25036 Palazzolo sull'Oglio - Brescia - Italy
Phone +39 030 7453357 - Fax +39 030 7453105
info@lmmmedicaldivision.com
www.lmmmedicaldivision.com

Follow us on:



LM Partner

